

# Byron Bay Public School

17 Kingsley Street, Byron Bay NSW 2481



CONRAD GARGETT

Brisbane Studio

Level 26 / 240 Queen Street  
Brisbane Qld 4000

Telephone +61 7 3229 3555  
Facsimile +61 7 3221 7878  
mail@conradgargett.com.au  
www.conradgargett.com.au

# Contents

	Cover Page
	Contents
LA001	Design Rationale
LA002	Learning Experiences
LA003	Design Inspiration
LA004	Landscape Design Intent
LA005	Functional Diagram
LA006	Overall Landscape Concept Plan
LA007	Homebase Landscape Plan
LA008	Kindie Area Landscape Plan
LA009	Tree Retention and Removal Plan
LA010	Material Palette - Hardscape
LA011	Material Palette - Softscape
LA012	Planting Schedule

Revision	Description	Issue Date	Prepared By	Approved By
A	DA Issue	08/28/2017	LMorgia	Katharina Nieberler-Walker

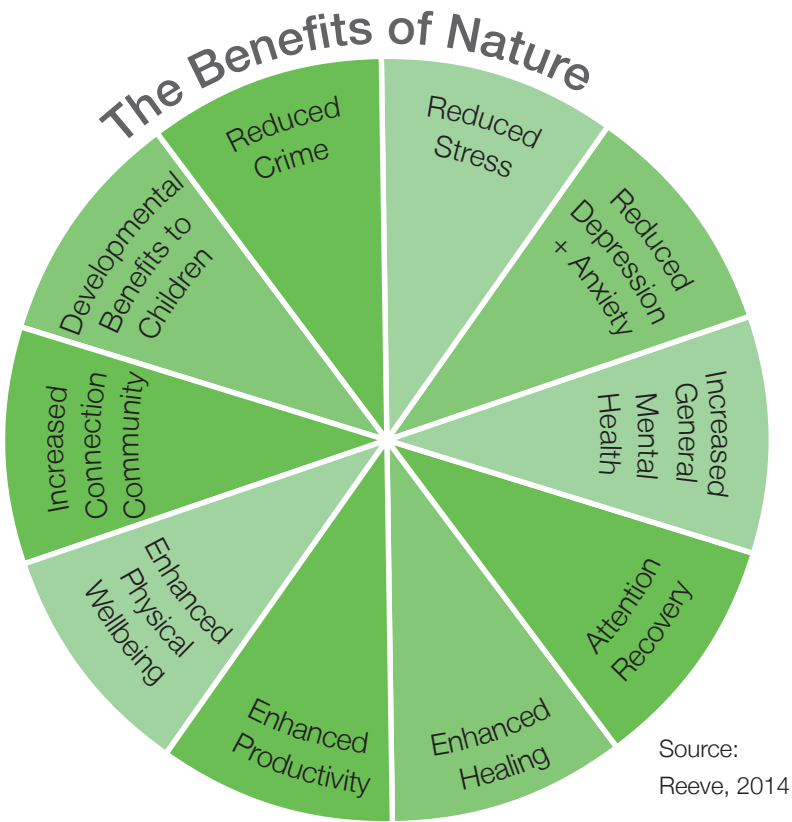
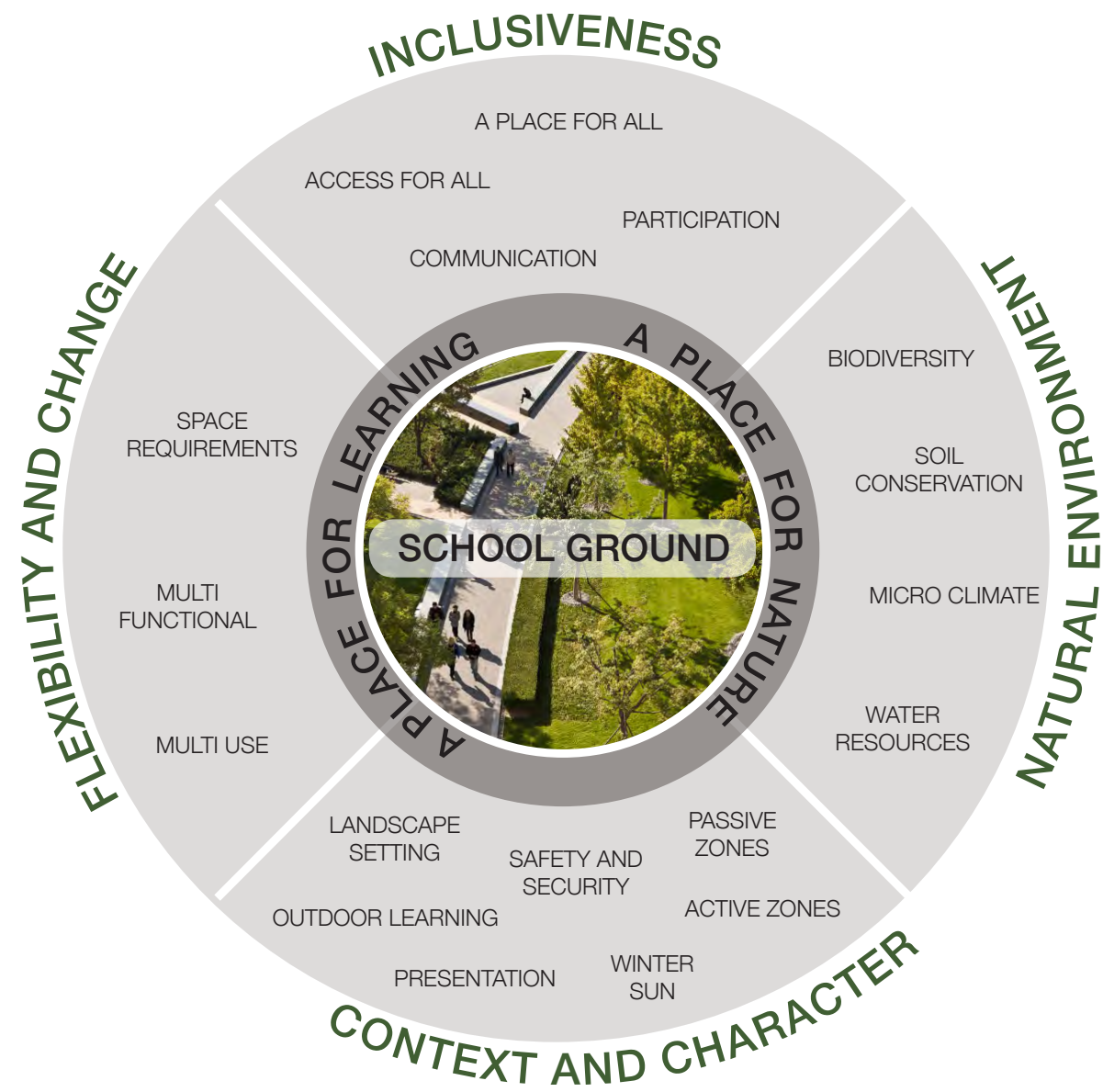
This report is produced by CONRAD GARGETT for NSW Education.



# Design Rationale

Byron Bay Primary School is located immediately to the south of town centre and within close proximity of the coastline. It belongs to the Ballina- Byron school cluster within North Coast Region that falls within the Tweed Local Government area and is located immediately to the south of the Byron Bay town centre and coastline.

Byron Bay Primary School is well established existing school located on the coastline of northern NSW. The western half of the site is densely built while the eastern end to Tennyson street is in form of outdoor playing field. The ‘heart’ of the site is the park like hub area surrounded by the building and featuring COLA and two large trees.



## DESIGN OBJECTIVE

### “C.A.R.E.”

**CREATE** landscape spaces that encourage interaction and communication among children and that is conducive to meeting or gathering for learners and staffs of different ages, social and cultural background.

**ACTIVATE** multi-functional and flexible spaces that can accomodate varied functions and activities that will allow children to explore, engage and reach beyond their comfort zone.

**REMAKE** outdoor learning environments that enhance the wellbeing of children and staffs, forms integral part of teaching and learning, and reinforces positive behavior among children / learners such as spaces for reflection and taking time-out.

**ENGAGE** learners and staffs in preserving the school's native plants and green environment by providing a place that showcase the natural environment.





# Learning Experiences

OPPORTUNITIES FOR MANY THINGS

- DISCOVERY
- STIMULATING
- PARTICIPATION
- RELAXATION
- GEOGRAPHY
- GEOMETRY
- CALCULATIONS
- ACADEMICS
- CULTURE
- TECHNOLOGY
- RESOURCES
- MAPPING
- DIGITAL MEDIA
- ARTS
- AMENITY
- INCLUSIVE
- TIME OF DAY
- NUMBERS
- WELL-BEING
- SOCIAL SKILLS
- POETRY
- EXPERIMENTS
- SPORTS
- COMMUNITY EVENTS
- DIMENSIONS
- OUTDOOR ACTIVITIES
- PASSIVE AND ACTIVE RECREATION
- COLOUR
- HABITAT
- REFUGE
- ANIMALS AND PLANTS
- APPRECIATION
- MUSIC & DANCE
- EXPRESSION





# Design Inspiration

## The Cedar Wood

The landscape design takes inspiration from the first industry in Byron that was cedar logging from the Australian red cedar (*Toona ciliata*). The timber industry is the origin of the word “shoot” in many local names – Possum Shoot, Coopers Shoot and Skinners Shoot – where the timber-cutters would “shoot” the logs down the hills to be dragged to waiting ships.

The landscape layout is generally linear in geometry and takes inspiration from “colonnade of trees” and twigs.

Semi circle seating nodes are provided to represent the meeting place that the Aboriginals had - the “Cavvanbah”.

Colours and finishes take inspiration from surrounding nature with hues of earth, sand and beach.





# Landscape Design Intent

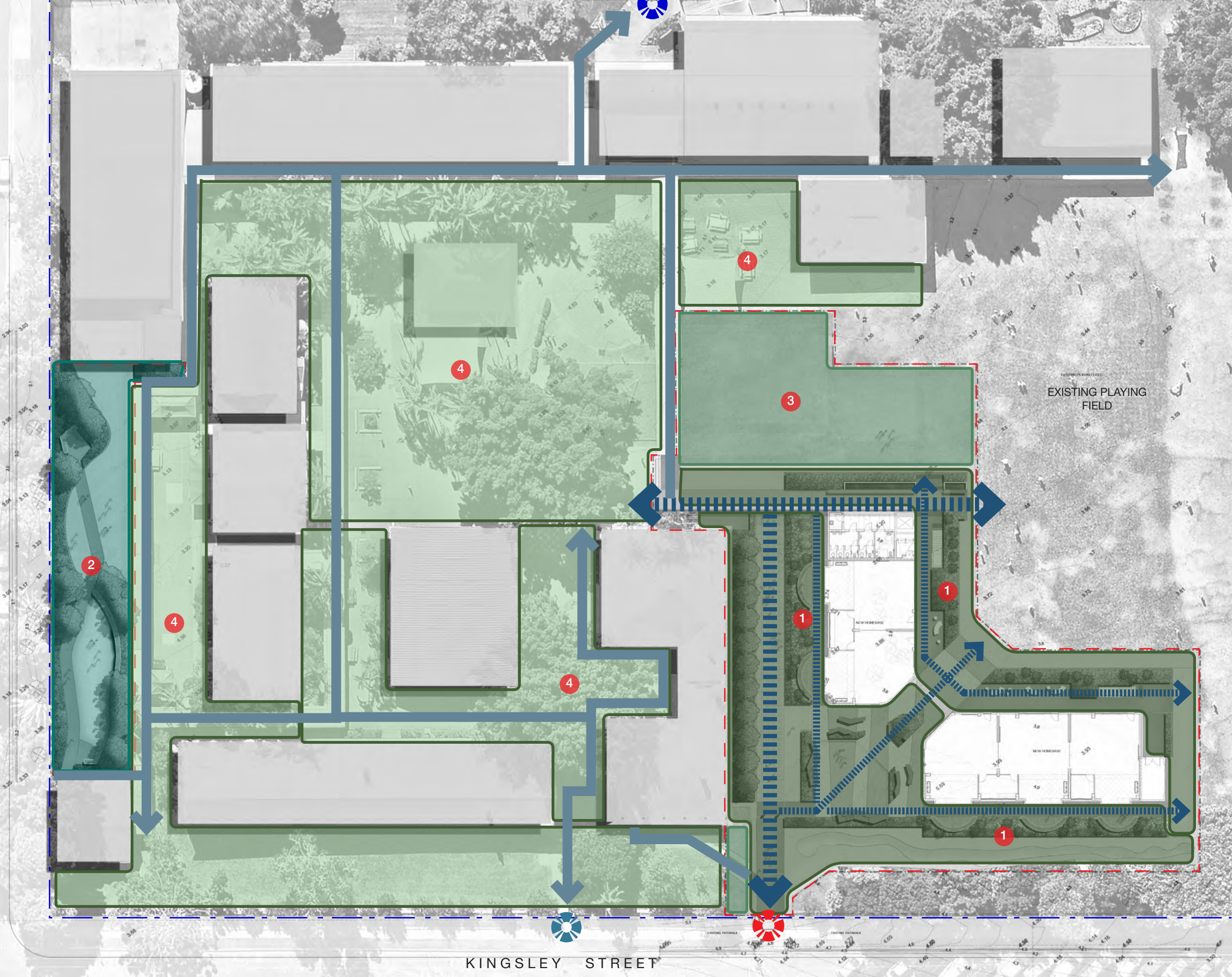
Design intent for Byron Bay Public School is to create and explore an environment that offers teaching staff and students with flexible spaces that best meet teaching, learning and play requirements.

Key areas of focus within the proposed design include a suitable outdoor learning spaces and activity areas that creates a sense of place and that fosters what the values that Byron Bay Public School promotes.





Functional Diagram



- LEGEND
- 1 New Landscape Areas
  - 2 New Landscape Area - Kindie Area
  - 3 Make Good Landscape - Turf
  - 4 Retain Existing
  - Existing Circulation
  - New Major Circulation
  - New Minor Circulation
  - Existing Main Entrance
  - Existing Main Entrance - Visitors
  - Proposed Secondary Entrance (locked during school hours)
  - Site Boundary
  - Landscape Extent of Work



# Landscape Schematic Plan



- LEGEND**
- 1 Convenience Gate / Pedestrian Entry (locked during school hours)
  - 2 Emergency Vehicle Access
  - 3 Meeting Place / Small Gatehring Area
  - 4 Main Spine
  - 5 Seating Node
  - 6 Make Good Landscape - Turf Area
  - 7 Kindie Area - Playground (Sand Softfall)
  - 8 Kindie Area - Activity Lawn
  - 9 Reinstated Bicycle Parking Area
  - 10 Existing Main Entrance - Visitors (Outside Scope)
- Site Boundary
- Landscape Extent of Work



# Homebase Landscape Plan

## LEGEND

- 1 Pedestrian Entry
- 2 Emergency Vehicle Access - Reinforced Turf
- 3 Removeable Bollards
- 4 Open Area - for meeting / small gathering
- 5 Stepped Seating
- 6 Seating Wall
- 7 Planting - plants to be suitable for shaded / semi-shaded condition
- 8 Seating Nodes for small group
- 9 Outdoor Learning Edge
- 10 Stairs
- 11 Amenity Turf
- 12 Covered Walkway
- 13 Turf Swale
- 14 Buffer Planting for privacy and enhancement of existing heritage building
- 15 Reinstated Bicycle Parking Area

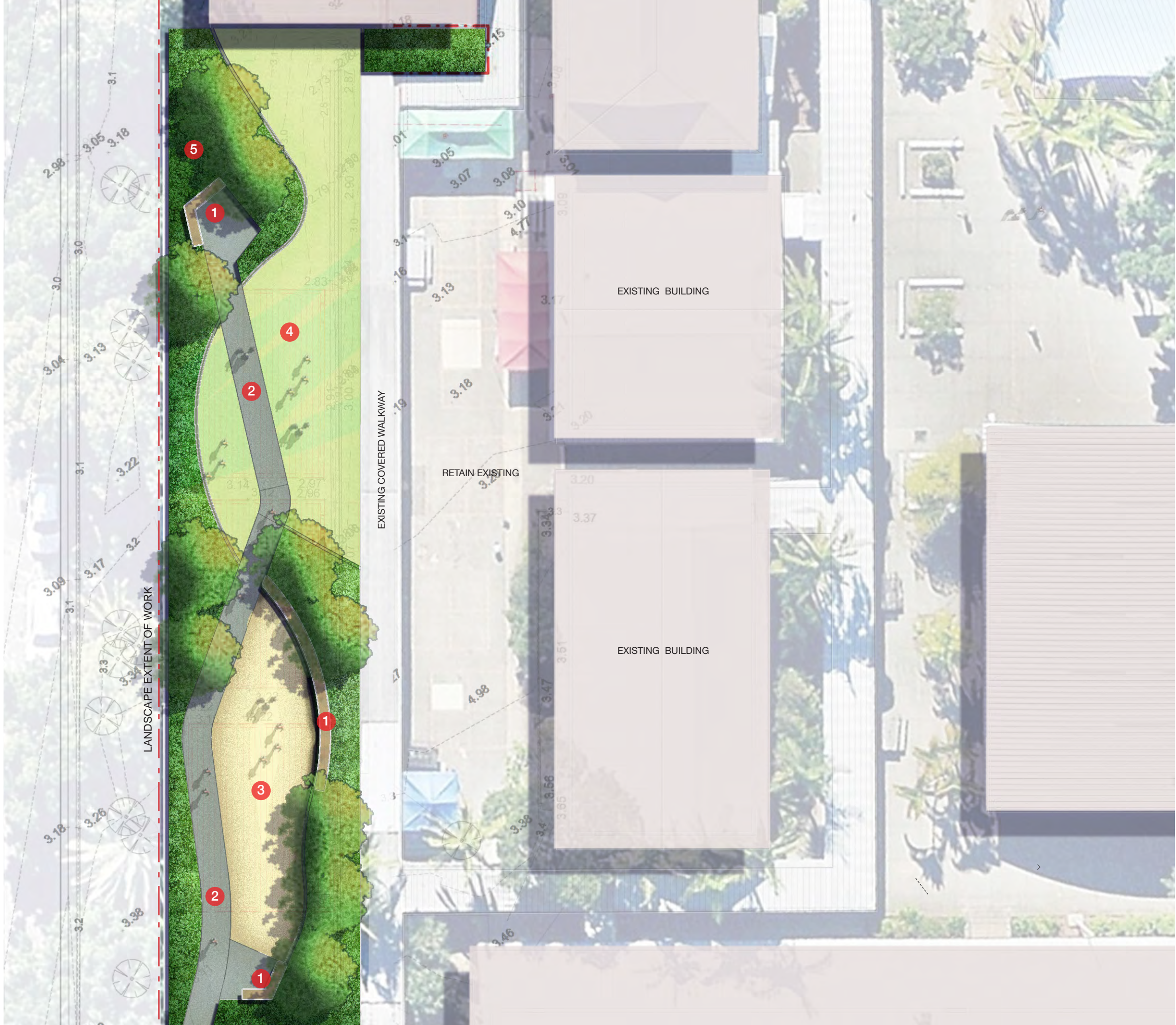




# Kindie Area Landscape Plan

## LEGEND

- 1 Seating Node with Sandstone Block Seating Wall
- 2 Walkway
- 3 Nature based play - with sand soffall and play equipment to be made from logs of removed trees.
- 4 Activity Lawn - Turf Area
- 5 Planting Buffer





# Tree Retention and Removal Plan



- LEGEND**
- Tree to be Retained
  - Trees Outside Extent of Work - To be retained
  - Tree to be Removed
  - Extent of Work
  - Site Boundary



Material Palette - Hardscape

PAVING

INDICATIVE ONLY

FULL DEPTH COLOURED CONCRETE  
Colour: CCS Smokey Blue  
Finish: Broom Finish

INDICATIVE ONLY

FULL DEPTH COLOURED CONCRETE  
Colour: CCS Citrus Cream  
Finish: Broom Finish

INDICATIVE ONLY

FULL DEPTH COLOURED CONCRETE  
Colour: CCS Driftwood  
Finish: Broom Finish



PERMEABLE PAVING  
Adbri "Ecotrihex" Permeable Paver  
Colour: Oatmeal  
Finish: Shotblast



TACTILE INDICATORS  
300mm x 300mm x 40mm  
Type: Concrete Paver  
Colour: CCS Charcoal / CCS Ivory  
Supplier: Chelmstone or equivalent



CONCRETE EDGE  
150mm x 150mm

REINFORCED TURF



REINFORCED TURF  
Atlantis Turf Cell or equivalent  
Size: 52mm (H) x 260mm (W) x 480mm (L)


General Note:

Selection & images are for the purpose of indicating the Landscape Design Intent only. Final selections will be equal to or similar to those nominated.

SEATING WALL



SANDSTONE SEATING WALL  
A Grade Sandstone Blocks  
Sandstone Hub or equivalent



IN SITU CONCRETE SEATING WALL  
Plain Grey Concrete




N SITU CONCRETE STEPPED SEATING  
(Plain Grey Concrete) with Timber Seating  
Timber: 135mm x 32mm Blackbutt F23 -  
Stained with 2 coats of Cutek 'Extreme'

FURNITURE



875mm (H) x 115mm diameter  
Type: B5 Dome  
Finish: Aluminium Powder Coated  
Mounting: Removeable Surface-fixed  
Supplier: Street Furniture Australia or equivalent



600mm (W) x 1240mm (H) x 605mm (D) -  
Cladding: Black Powder Coated Steel,  
Chute and Cover: Black Powder Coated Steel  
Slats: Select Timber Hardwood, Low maintenance  
Supplier: MOS or equivalent



Material Palette - Softscape

TREES



Elaeocarpus reticulatus  
BLUEBERRY ASH  
5m max.H x 3m spread



Syncarpia glomulifera  
TURPENTINE TREE  
5m max.H x 3m spread



Tristaniopsis laurina  
WATER GUM  
10m max.H x 5m spread

SHRUBS



Acmena smithii 'Allyn Magic'  
DWARF LILLYPILLY  
200mm min. pot size  
3/sqm



Dianella caerulea  
FLAX LILY  
140mm min. pot size  
4/sqm



Doryanthes excelsa  
GYMEA LILY  
200mm min. pot size  
Used as an accent plant



Lomandra longifolia  
MAT-RUSH  
140mm min. pot size  
4/sqm



Syzygium australe 'Tiny Trev'  
DWARF LILLYPILLY  
140mm min. pot size  
4/sqm

GROUND COVERS



Juniperus conferta  
SHORE JUNIPER  
140mm min. pot size  
4/sqm



Kennedia coccinea  
CORAL CREEPER  
140mm min. pot size  
4/sqm



Myoporum parvifolium  
Creeping Myoporum  
140mm min. pot size  
4/sqm

General Note:  
  
Selection & images are for the purpose of indicating the Landscape Design Intent only. Final selections will be equal to or similar to those nominated.



Planting Schedule

									Low	Medium	Shade	Windbreak	Screen	Foliage Contrast	Decorative Bark	Soil Binder	Insect / Bird Attracting	Large Scale Planting	Entrance	Street Frontage	Assembly	Passive	Active	Boundary
Botanical Name	Common Name	Form	Flowering Period	Mature Height	Hardiness	Growth Rate	Soil Type	Light Requirements	Allergy Rating	Key Function								Ideal Zones of Use						
TREES																								
Elaeocarpus reticulatus	Blueberry Ash	Large shrub or small tree	October to December	10-15 m	Salt tolerant	Fast growing	Very adaptable	Full sun, part shade	<div></div>	<div></div>	<div></div>	<div></div>	<div></div>	<div></div>	<div></div>	<div></div>	<div></div>	<div></div>	<div></div>	<div></div>	<div></div>	<div></div>	<div></div>	<div></div>
Syncarpia glomulifera	Turpentine Tree	Medium, evergreen tree	Spring	20m	Tolerates short drought	Moderate	Heavier Soils	Full sun, part shade	<div></div>	<div></div>	<div></div>	<div></div>	<div></div>	<div></div>	<div></div>	<div></div>	<div></div>	<div></div>	<div></div>	<div></div>	<div></div>	<div></div>	<div></div>	<div></div>
Tristaniopsis laurina	Water Gum	Medium, evergreen tree	December to January	15-20 m	Tolerates short drought	Fast	Littoral sands	Part Shade	<div></div>	<div></div>	<div></div>	<div></div>	<div></div>	<div></div>	<div></div>	<div></div>	<div></div>	<div></div>	<div></div>	<div></div>	<div></div>	<div></div>	<div></div>	<div></div>

									Low	Medium	Border	Groundcover	Screen	Foliage Contrast	Specimen Plant	Soil Binder	Insect / Bird Attracting	Mass Planting	Colour / Habitat Contrast	Entrance	Street Frontage	Assembly	Passive	Active	Boundary
Botanical name	Common Name	Form	Flowering Period	Mature Height	Hardiness	Growth Rate	Soil Type	Light Requirements	Allergy Rating	Key Function									Ideal Zones of Use						
SHRUBS																									
Acmena smithii ‘Allyn Magic’	Dwarf Lillypilly	Small shrub	Spring to mid summer	600 mm	Salt tolerant, protect from harsh winds	Moderately vigorous	Prefers reliably moist loams, but adaptable	Full sun	Green				Purple		Purple						Orange	Orange	Orange	Orange	Orange
Dianella caerulea	Flax Lily	Tufted shrub	October to February	600 mm	Hardy once established	Moderate	Sandy	Full sun, part shade	Green		Purple							Purple			Orange	Orange	Orange	Orange	Orange
Doryanthes excelsa	Gynea Lily	Large, tufted shrub	August to November	2 m	Hardy	Show to moderate	Deep sandy	Full sun, shade	Green			Purple			Purple						Orange	Orange	Orange	Orange	Orange
Lomandra longifolia	Spiny-headed, Mat-rush	Tufted shrub	August to December	800 mm	Very hardy	Fast	Adaptable	Adaptable		Green								Purple			Orange	Orange	Orange	Orange	Orange
Syzygium australe ‘Tiny Trev’	Dwarf Lillypilly	Small shrub	Spring to mid summer	600 mm	Salt tolerant, protect from harsh winds	Moderately vigorous	Prefers reliably moist loams, but adaptable	Full sun	Green				Purple		Purple						Orange	Orange	Orange	Orange	Orange
GROUND COVERS AND TURF																									
Juniperus conferta	Shore Jupiter	Evergreen, coniferous shrub	N/A	300 mm	hardy front line salt and wind tolerant	Moderate to vigorous, long lived	Sandy clay soils, moderate drainage	Full sun		Green		Purple								Orange		Orange	Orange	Orange	
Kennedia coccinea	Coral creeper	Spreading mat	July to November	300 mm	Hardy	Moderate to vigorous, long lived	Sandy loam added organic matter	Full sun, light shade	Green		Purple	Purple						Purple	Purple		Orange	Orange	Orange	Orange	Orange
Myoporum parvifolium	Creeping myoporum	Spreading mat	N/A	300 mm	Hardy	Moderate to vigorous, long lived	Sandy loam added organic matter	Full sun, light shade	Green		Purple	Purple						Purple	Purple		Orange	Orange	Orange	Orange	Orange